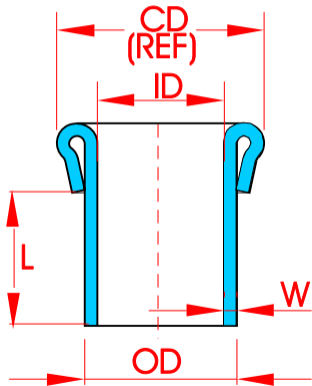


# NYLTITE HEADED SLEEVE

**PN=NHS-10-12**

.194 ID

1.5 LONG



# DIMENSIONS FOR ALL NYLTITE PRODUCTS

<i>P/N</i>	SCREW SIZE	ID <sup>+0.004</sup> -0.003	W <sup>+0.002</sup> -0.002	OD <sup>+0.008</sup> -0.008	CD (REF.)	TH <sup>+0.025</sup> -0.015	LENGTH	
							<i>P/N</i>	L <sup>+0.025</sup> -0.015
<i>XXX 01- XX</i>	# 1	.075	.012	.099	.165	.060	<i>XXX-XX-05</i>	<i>.062</i>
<i>XXX 02- XX</i>	# 2	.088	.012	.112	.175	.065	<i>XXX-XX-1</i>	<i>.125</i>
<i>XXX 03- XX</i>	# 3	.101	.012	.125	.185	.070	<i>XXX-XX-2</i>	<i>.250</i>
<i>XXX 04- XX</i>	# 4	.116	.013	.140	.195	.080	<i>XXX-XX-3</i>	<i>.375</i>
<i>XXX 05- XX</i>	# 5	.129	.014	.159	.210	.085	<i>XXX-XX-4</i>	<i>.500</i>
<i>XXX 06- XX</i>	# 6	.142	.015	.172	.225	.095	<i>XXX-XX-5</i>	<i>.625</i>
<i>XXX 08- XX</i>	# 8	.164	.015	.198	.270	.115	<i>XXX-XX-6</i>	<i>.750</i>
<i>XXX 10- XX</i>	# 10	.194	.017	.228	.300	.115	<i>XXX-XX-7</i>	<i>.875</i>
<i>XXX 12- XX</i>	# 12	.220	.017	.254	.330	.125	<i>XXX-XX-8</i>	<i>1.000</i>
<i>XXX 14- XX</i>	1/4	.252	.020	.292	.365	.125	<i>XXX-XX-9</i>	<i>1.125</i>
<i>XXX 15- XX</i>	5/16	.316	.020	.356	.460	.130	<i>XXX-XX-10</i>	<i>1.250</i>
<i>XXX 16- XX</i>	3/8	.379	.020	.419	.535	.160	<i>XXX-XX-11</i>	<i>1.375</i>
<i>XXX 17- XX</i>	7/16	.441	.022	.486	.600	.170	<i>XXX-XX-12</i>	<i>1.500</i>
<i>XXX 18- XX</i>	1/2	.504	.022	.548	.645	.195	<i>XXX-XX-13</i>	<i>1.625</i>
<i>XXX 19- XX</i>	5/8	.629	.025	.679	.800	.210	<i>XXX-XX-14</i>	<i>1.750</i>
<i>XXX 20- XX</i>	3/4	.754	.028	.810	.935	.220	<i>XXX-XX-15</i>	<i>1.875</i>
<i>XXX 21- XX</i>	7/8	.890	.032	.954	1.030	.240	<i>XXX-XX-16</i>	<i>2.000</i>
<i>XXX 22- XX</i>	1	1.005	.035	1.075	1.280	.250	<i>XXX-XX-17</i>	<i>2.125</i>
							<i>XXX-XX-18</i>	<i>2.250</i>
							<i>XXX-XX-19</i>	<i>2.375</i>

DIMENSIONS NOT FOUND IN THIS TABLE ARE PER CUSTOMER SPECIFICATIONS. SOME SIZES ARE ALSO AVAILABLE IN TEFLON. (TM)

## TEST DATA AND SPECIFICATIONS

MATERIAL: NYLTITE PRODUCTS ARE MADE FROM DuPONT NATURAL NYLON WHICH CAN BE COLORED AND WHICH MEETS MIL P-17091-B AND M-20693-A.

SOME TYPICAL PROPERTIES:

NYLON HAS A SHARP MELTING POINT AT ABOUT 485 DEG. F. BELLOW WHICH IT REMAINS A SOLID, ABOVE WHICH IT BECOMES FLUID.

- |  |   |
|--|---|
| -MAX. WORKING TEMP: UNDER LOAD 250 DEG. F. | -DEFLECTION TEMP. @ 66 PSI 360 F.               |
| -THERMAL CONDUCTIVITY 1.2 BTU/HR/SQ.FT/IN  | - @ 264 PSI 155-160 F.                          |
| -TEMPERATURE RANGE -70 TO + 250 DEG. F.    | -SHRINKAGE 0.12 TO 0.20 IN/IN                   |
| -TENSILE STRENGTH (AT -70 F) 15,700 PSI    | -HARDNESS (ROCKWELL) R118...R120                |
| -TENSILE STRENGTH (AT +73 F) 12,500 PSI    | -VOLUME RESISTIVITY 4.5X10 <sup>13</sup> OHM-CM |
| -COMPRESSIVE STRENGTH 1% OFFSET 9,700 PSI  |   |
| -DIELECTRIC CONSTANT @ 60 Hz. 4.1          |   |
| -POWER FACTOR @ 60 Hz 0.014                |   |