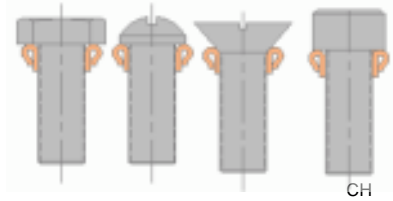




NYLTITE ROLLED COLLARS:

- Lock and seal
- Act as an anti-rotational device
- Assist with vibration damping
- Are available as full assemblies or components



PART NUMBER	SCREW SIZE	NOMINAL (DEC. INCH)	ID +.004/-.003	W +/- .002	OD +/- .008	CD +.025/-.015	TH +/- .030	CH (REF)
NRC-02	2	0.086	0.088	0.012	0.112	0.175	0.065	0.050
NRC-03	3	0.099	0.101	0.012	0.125	0.185	0.070	0.055
NRC-04	4	0.112	0.116	0.013	0.140	0.195	0.080	0.065
NRC-05	5	0.125	0.129	0.014	0.159	0.210	0.085	0.070
NRC-06	6	0.138	0.142	0.015	0.172	0.225	0.095	0.075
NRC-08	8	0.164	0.168	0.015	0.198	0.270	0.115	0.080
NRC-10	10	0.190	0.194	0.017	0.228	0.300	0.115	0.080
NRC-12	12	0.216	0.220	0.017	0.254	0.330	0.125	0.100
NRC-14	1/4	0.250	0.252	0.020	0.292	0.365	0.125	0.100
NRC-15	5/16	0.312	0.316	0.020	0.356	0.460	0.130	0.105
NRC-16	3/8	0.375	0.379	0.020	0.419	0.535	0.160	0.125
NRC-17	7/16	0.437	0.441	0.022	0.486	0.600	0.170	0.135
NRC-18	1/2	0.500	0.504	0.022	0.548	0.645	0.195	0.155
NRC-19	5/8	0.625	0.629	0.025	0.679	0.800	0.210	0.160
NRC-20	3/4	0.750	0.754	0.028	0.810	0.935	0.220	0.170
NRC-21	7/8	0.875	0.879	0.032	0.954	1.030	0.240	0.180
NRC-22	1.0	1.000	1.005	0.035	1.075	1.280	0.250	0.185

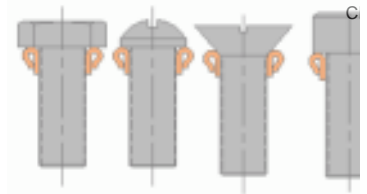


- Lock and seal

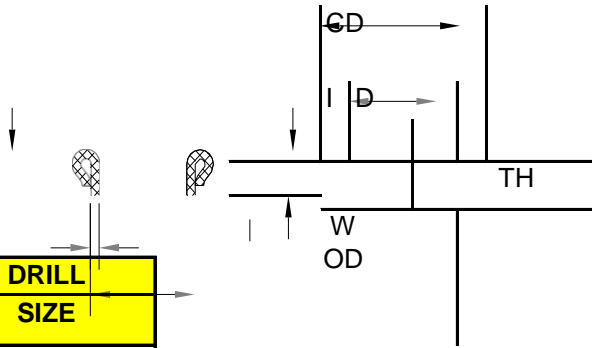
- Assist with vibration damping
- Are available as full assemblies or components

METRIC SIZES

(dims in mm)



PART NUMBER	SCREW SIZE	NOMINAL metric	ID $+0.102/-0.076$	W $+/-0.051$	OD $+/-0.203$	CD $+0.635/-0.381$	TH $+/-0.762$	CH (REF)
NRC-02.5M	M2.5	2.5	2.57	0.30	3.10	4.42	2.03	1.63
10079	M3	3	3.07	0.33	3.66	5.03	2.03	1.63
10081	M4	4	4.06	0.38	4.75	6.22	2.74	2.08
11752	M5	5	5.05	0.43	5.84	7.87	2.92	2.34
10097	M6	6	6.10	0.43	6.86	8.99	3.10	2.59
11750	M8	8	8.08	0.51	9.02	11.99	3.35	2.67
11751	M10	10	10.06	0.51	11.00	12.93	3.96	3.15
10235	M12	12	12.09	0.56	13.13	15.62	4.45	3.56
NRC14M	M14	14	14.07	0.56	15.11	17.78	4.88	3.94
11652	M16	16	16.05	0.64	17.25	20.32	5.33	4.06



DRILL SIZE
#31 (0.120)
#29 (0.136)
#25 (0.149)
#19 (0.166)
#15 (0.180)
#5 (0.205)
A (0.234)
G (0.261)
N (0.302)
T (0.358)
27/64 (0.421)
31/64 (0.484)
9/16 (0.562)
11/16 (0.687)
13/16 (0.812)
15/16 (0.937)
1 3/32 (1.093)

TYPICAL PART NUMBER :
NRC-10-4

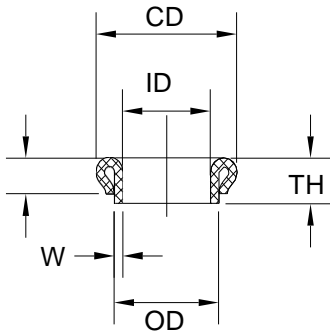
NYLTITE ROLLED COLLAR FOR #10 SCREW

REFERENCE ONLY. EACH

PLEASE NOTE THE DRILL SIZES ARE TO BE USED AS

ING TO ENSURE PROPER FIT

A
APPLICATION IS DIFFERENT AND REQUIRES YOUR
TEST-
FOR YOUR APPLICATION.



DRILL SIZE
3.3
3.9
5.0
6.0
7.0
9.1
11.1
13.5
15.5
17.4

TYPICAL PART NUMBER :
10081
 NYLTITE ROLLED COLLAR FOR
 M4 SCREW